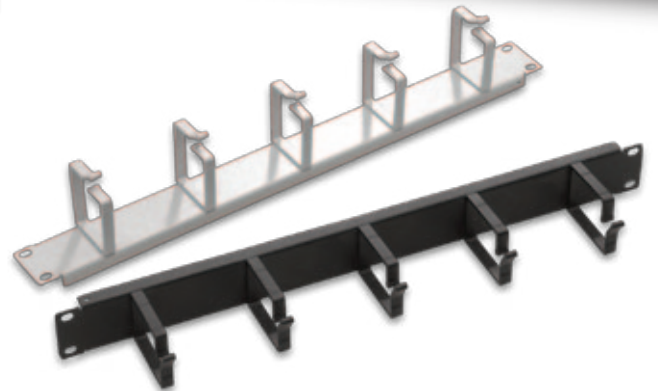
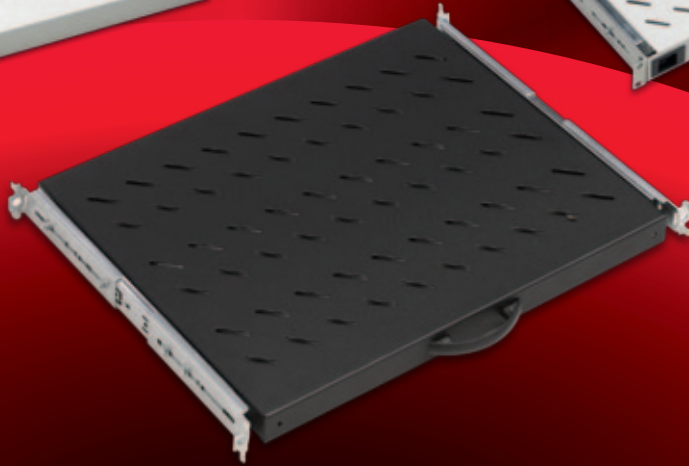
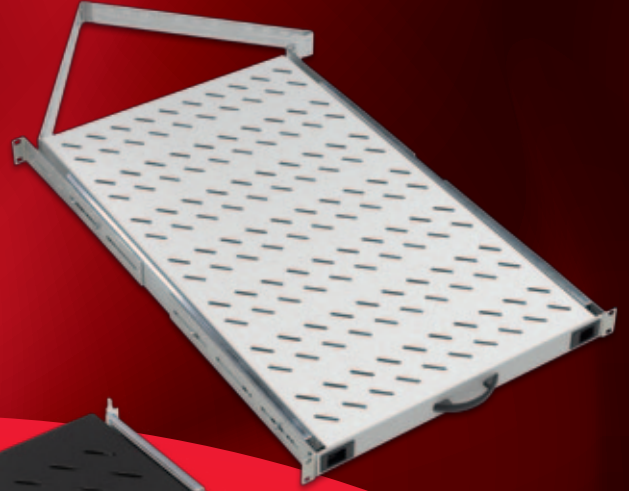
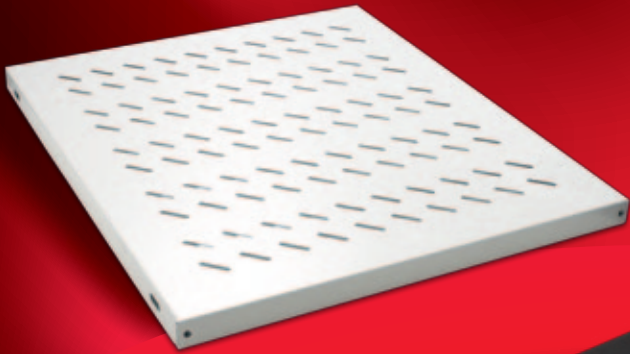


# ACCESSORIES



# ACCESSORIES

## SENSED and CORD SWITCHED LIGHTING MODULES

### BASE GROUP: CASTER, FEET, FLOOR FIXING KIT



There are 2 models of LED lighting units for cabinets. 19" 1U, turning function up/down, automatically operating once door is open, closing once door is closed or no movement detected in 60 seconds. Other Model is LED lighting 19" with cord switch equipped with magnets and hook. Where can be hanged or stucked on any metal part of cabinet. 220VAC.

SENSORED LIGHTING MODULE	Logistics Data										COMPATIBLE WITH																		
											DYNAmic Series Free Standing Cabinets W (Width) x D (Depth) mm	DYNAmic Series Free Standing Server Cabinets W (Width) x D (Depth) mm	NETBox Series Wall Mounting Cabinets W (Width) x D (Depth) mm	19" NETBox Series SOHO Cabinets W (Width) x D (Depth) mm	10" NETBox Series SOHO Cabinets W (Width) x D (Depth) mm	19" NETBox Home Series Cabinets W (Width) x D (Depth) mm	NETBox Slim Series Cabinets W (Width) x D (Depth) mm	DYNAframe Frame Systems W 530 x D (Depth) mm											
Part Number and Product Description	Product Dimensions mm	Pack Dimensions mm	Product Net Weight kg	Product Gross Weight kg	QTY in Box pcs	Box Dimensions mm	Box Gross Weight kg	600x600	600x800	600x1000	800x600	800x800	800x1000	600x1000	800x1000	600x450	600x600	600x450+150	540x300	540x400	3 L2x300	600x150	600x300	522x480	Single Frame with 80mm depth Frame	Double Frame System with 80mm depth Frame D:670mm	Double Frame System with 80mm depth Frame D:870mm	Double Frame System with 80mm depth Frame D:1070mm	Single Frame with 160mm depth Frame
<b>LN-DGR-AYD-1UOT-XX</b> Lighting Module 1U 19", Door switched sensor - automatically operating once doors are open, LED LIGHTING, Turning function up/down	482x35x44	500x150x55	0,48	0,65	32	545x425x400	22	●	●	●	●	●	●	●	●	●	●	●	●	●		●	●	●					
<b>LN-DGR-AYD-1UMG-XX</b> Lighting Module 1U 19", Cord switched, magnet equipped, with hook system.	450x23x24	540x145x65	0,26	0,5	20	545x425x400	11	●	●	●	●	●	●	●	●	●	●	●	●	●		●	●	●	●				

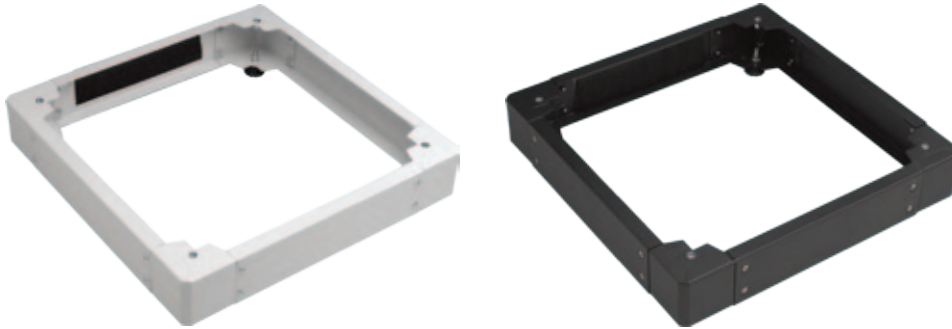


Adjustable feet group, and 360 degree full mobile on y axis caster sets, each set is of 4 which 2 are with brakes, 2 are without brakes.

Floor Fixing Kits integration to W=600 and W=800mm DYNAmic cabinets while product is in use with leveling feet, for purpose of Securing the cabinet against tilting risk and vibration. From Steel Material, Supply is in RAL 9005 Black and RAL 7035 Light Grey colors.

BASE GROUP: CASTER, FEET, FLOOR FIXING KIT	Logistics Data										COMPATIBLE WITH																		
											DYNAmic Series Free Standing Cabinets W (Width) x D (Depth) mm	DYNAmic Series Free Standing Server Cabinets W (Width) x D (Depth) mm	NETBox Series Wall Mounting Cabinets W (Width) x D (Depth) mm	19" NETBox Series SOHO Cabinets W (Width) x D (Depth) mm	10" NETBox Series SOHO Cabinets W (Width) x D (Depth) mm	19" NETBox Home Series Cabinets W (Width) x D (Depth) mm	NETBox Slim Series Cabinets W (Width) x D (Depth) mm	DYNAframe Frame Systems W 530 x D (Depth) mm											
Part Number* and Product Description	Product Dimensions mm	Pack Dimensions mm	Product Net Weight kg	Product Gross Weight kg	QTY in Box pcs	Box Dimensions mm	Box Gross Weight kg	600x600	600x800	600x1000	800x600	800x800	800x1000	600x1000	800x1000	600x450	600x600	600x450+150	540x300	540x400	3 L2x300	600x150	600x300	522x480	Single Frame with 80mm depth Frame	Double Frame System with 80mm depth Frame D:670mm	Double Frame System with 80mm depth Frame D:870mm	Double Frame System with 80mm depth Frame D:1070mm	Single Frame with 160mm depth Frame
<b>LN-ZMN-TKR-5525-XX</b> Free Standing Caster Set, 1 set=4 pcs, 2w/break, 2wo/break. Load capacity 250kgs per caster.	55x25	200x1145x95	2	2,2	6	560x425x122	14,2	●	●	●	●	●	●	●	●	●	●	●	●	●									
<b>LN-ZMN-PNY-1040-XX</b> PVC Leveling Feet Group 1 set=4 pcs, M10. Load capacity 250kgs per fit.	M10x35	80x82x100	0,2	0,3	30	560x425x122	10	●	●	●	●	●	●	●	●	●	●	●	●	●		●	●	●	●				
<b>LN-ZMN-TKR-5020-XX</b> Caster Set 1 set=4 pcs, M10 Single Point Fixing, for Wall Mounting Type cabinets. Load capacity 100kgs per caster.	M10	260x160x50	0,8	1	27	545x425x400	28									●	●	●	●	●									
<b>LN-ZMN-TKR-5525-01</b> Caster Set, 1 set=4 pcs, 2w/break, 2wo/break for DYNAframe Open racks, Single point fixing. Load capacity 150kgs per caster.	M10	200x145x95	2	2,2	6	560x425x122	14,2									●	●	●	●	●									
<b>LN-ZMN-DPR-W600-CC</b> W=600mm Floor Fixing Kit- 1 set 2 pcs, Front and rear application, suitable with PVC leveling Feet	575x125x30	600x145x50	3	3,5	1	600x145x50	3,5	●	●	●																			
<b>LN-ZMN-DPR-W800-CC</b> W=800mm Floor Fixing Kit- 1 set 2 pcs, Front and rear application, suitable with PVC leveling Feet	775x125x30	800x145x50	3,6	4	1	800x145x50	4				●	●	●																

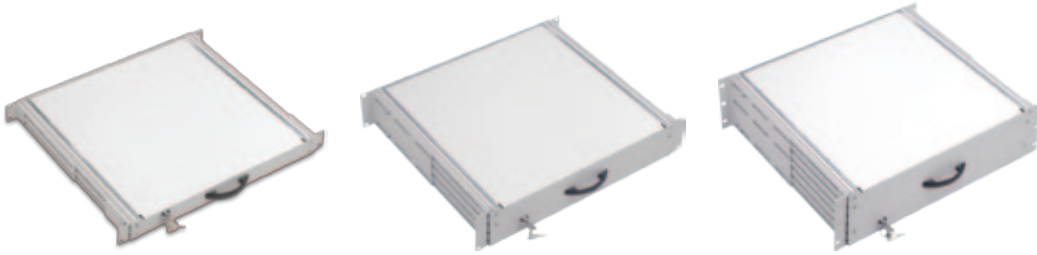
\* CC= Color Code, LG Light Grey RAL 7035, BL Black RAL 9005, customers to define while ordering.



100 mm height, to integrate under bottom case of cabinet, with the intend of establishing cable reserve as well to raise cabinet to a certain height from the floor. The brushed entry at rear side allows cable entry from rear. Supply is in RAL 9005 Black and RAL 7035 Light Grey colors. From Steel Material, with high technology bending strengthening accessory, Load capacity 1000 kg

BASE GROUP; PLINTHS	Logistics Data		COMPATIBLE WITH																											
			DYNAmic Series Free Standing Cabinets W (Width) x D (Depth) mm	DYNAmic Series Free Standing Server Cabinets W (Width) x D (Depth) mm	NEIbox Series Wall Mounting Cabinets W (Width) x D (Depth) mm	19" NEIbox Series SOHO Cabinets W (Width) x D (Depth) mm	10" NEIbox Series SOHO Cabinets W (Width) x D (Depth) mm	19" NEIbox Home Series Cabinets W (Width) x D (Depth) mm	NEIbox Slim Series Cabinets W (Width) x D (Depth) mm	DYNAmic Frame Systems W 530 x D (Depth) mm																				
Part Number* and Product Description	Product Dimensions mm	Pack Dimensions mm	Product Net Weight kg	Product Gross Weight kg	QTY in Box pcs	Box Dimensions mm	Box Gross Weight kg	600x600	600x800	600x1000	800x600	800x800	800x1000	600x1000	800x1000	600x450	600x600	600x450+150	540x300	540x400	312x300	600x150	600x300	522x480	Single Frame with 80mm depth Frame	Double Frame System with 80mm depth Frame D:670mm	Double Frame System with 80mm depth Frame D:870mm	Double Frame System with 80mm depth Frame D:1070mm	Single Frame with 160mm depth Frame	
<b>LN-ZMN-BAZ-6060-CC</b> Plinth H=100mm W=600mm D=600mm Modular	600x600x100	620x620x110	5,2	6,3	1	620x620x110	6,3	●																						
<b>LN-ZMN-BAZ-6080-CC</b> Plinth H=100mm W=600mm D=800mm Modular	600x800x100	620x820x110	6,4	7,9	1	620x820x110	7,9	●																						
<b>LN-ZMN-BAZ-6010-CC</b> Plinth H=100mm W=600mm D=1000mm Modular	600x1000x100	620x1030x110	6,9	8,2	1	620x1030x110	8,2		●																					
<b>LN-ZMN-BAZ-8060-CC</b> Plinth H=100mm W=800mm D=600mm Modular	800x600x100	820x620x110	6,4	7,9	1	820x620x110	7,9			●																				
<b>LN-ZMN-BAZ-8080-CC</b> Plinth H=100mm W=800mm D=800mm Modular	800x800x100	820x820x110	7,2	8,9	1	820x820x110	8,9				●																			
<b>LN-ZMN-BAZ-8010-CC</b> Plinth H=100mm W=800mm D=1000mm Modular	800x1000x100	820x1030x110	7,5	9,2	1	820x1030x110	9,2					●																		
<b>LN-ZMN-BAS-6010-CC</b> Plinth H=100mm W=600mm D=1000mm Modular, for server cabinets	600x1000x100	620x1030x110	12,8	15,6	1	620x1030x110	15,6							●																
<b>LN-ZMN-BAS-8010-CC</b> Plinth H=100mm W=800mm D=1000mm Modular, for server cabinets	800x1000x100	820x1030x110	14,5	17,6	1	820x1030x110	17,6								●															

\* CC= Color Code, LG Light Grey RAL 7035, BL Black RAL 9005, customers to define while ordering.



General purpose storage drawers, could house various user manuals, software CDs secure way. Additionally can be integrated with Keyboard. Adjustable in depth mechanic sliding brackets specially designed and formed from extruded aluminium material. Supply is in RAL 9005 Black and RAL 7035 Light Grey colors. Main Body is from Steel Material, with high technology bending strengthening accessory, Load capacity 50 kg.

GENERAL STORAGE DRAWERS	Logistics Data		COMPATIBLE WITH																										
			DYNAMIC Series Free Standing Cabinets W (Width) x D (Depth) mm	DYNAMAX Series Free Standing Server Cabinets W (Width) x D (Depth) mm	NETBox Series Wall Mounting Cabinets W (Width) x D (Depth) mm	19" NETBox Series SOHO Cabinets W (Width) x D (Depth) mm	10" NETBox Series SOHO Cabinets W (Width) x D (Depth) mm	19" NETBox Home Series Cabinets W (Width) x D (Depth) mm	NETBox Slim Series Cabinets W (Width) x D (Depth) mm	DYNAlFrame Frame Systems W 530 x D (Depth) mm																			
Part Number* and Product Description	Product Dimensions mm	Pack Dimensions mm	Product Net Weight kg	Product Gross Weight kg	QTY in Box pcs	Box Dimensions mm	Box Gross Weight kg	600x600	600x800	600x1000	800x600	800x800	800x1000	600x1000	800x1000	600x450	600x600	600x450+150	540x300	540x400	312x300	600x150	600x300	522x480	Single Frame with 80mm depth Frame	Double Frame System with 80mm depth Frame D:670mm	Double Frame System with 80mm depth Frame D:870mm	Double Frame System with 80mm depth Frame D:1070mm	Single Frame with 160mm depth Frame
<b>LN-RAF-CEK-1U40-CC</b> 1U 19" Keyboard and General Storage Drawer D=400mm	482x405x44	515x415x55	3,6	4	6	545x425x400	26	●	●	●	●	●	●	●	●											●	●	●	
<b>LN-RAF-CEK-2U40-CC</b> 2U 19" Keyboard and General Storage Drawer D=400mm	482x405x88	515x425x100	5,5	6	4	545x425x400	26	●	●	●	●	●	●	●	●											●	●	●	
<b>LN-RAF-CEK-3U40-CC</b> 3U 19" Keyboard and General Storage Drawer D=400mm	482x405x130	515x425x150	7,1	7,7	3	550x430x480	25	●	●	●	●	●	●	●	●											●	●	●	

\* CC= Color Code, LG Light Grey RAL 7035, BL Black RAL 9005, customers to define while ordering.



4pcs Grounding wires, 4mm diameter Yellow /Green, 40cm long, for purpose of main grounding and potential equalization use.

GROUNDING SETS	Logistics Data		COMPATIBLE WITH																										
			DYNAMIC Series Free Standing Cabinets W (Width) x D (Depth) mm	DYNAMAX Series Free Standing Server Cabinets W (Width) x D (Depth) mm	NETBox Series Wall Mounting Cabinets W (Width) x D (Depth) mm	19" NETBox Series SOHO Cabinets W (Width) x D (Depth) mm	10" NETBox Series SOHO Cabinets W (Width) x D (Depth) mm	19" NETBox Home Series Cabinets W (Width) x D (Depth) mm	NETBox Slim Series Cabinets W (Width) x D (Depth) mm	DYNAlFrame Frame Systems W 530 x D (Depth) mm																			
Part Number* and Product Description	Product Dimensions mm	Pack Dimensions mm	Product Net Weight kg	Product Gross Weight kg	QTY in Box pcs	Box Dimensions mm	Box Gross Weight kg	600x600	600x800	600x1000	800x600	800x800	800x1000	600x1000	800x1000	600x450	600x600	600x450+150	540x300	540x400	312x300	600x150	600x300	522x480	Single Frame with 80mm depth Frame	Double Frame System with 80mm depth Frame D:670mm	Double Frame System with 80mm depth Frame D:870mm	Double Frame System with 80mm depth Frame D:1070mm	Single Frame with 160mm depth Frame
<b>LN-DGR-TPR-5L40-XX</b> Grounding Set, 6 grounding point, 4pcsx4mm diameterx 40cm long yellow/green wires, for basic grounding of cabinet chassis and panels	260x55x50	260x55x50	0,2	0,2	32	550x430x400	7,9	●	●	●	●	●	●	●	●											●	●	●	●
<b>LN-DGR-TPR-1U10-CC</b> 19" rack mount 1U Grounding Set, 10 grounding point, 4 pcsx4mm diameter x 40 cm long yellow/green wires, can be installed at any U height for all cabinet models, 4pcs set of M6 fixing elements.	482x35x44	500x45x50	0,4	0,5	1	500x45x50	0,5	●	●	●	●	●	●	●	●								●			●	●	●	●
<b>LN-DGR-TPR-DM20-XX</b> Vertical Grounding Set 780mm long each ,2pcs 22x2=44 grounding points, 4 pcsx4mm diameter x 40 cm long yellow/green wires, incl the connection wire for the 2 copper bar.	25x25x780	35x35x800	1,5	1,7	1	35x35x800	1,7	**	**	**	**	**	**	**	**														

\* CC= Color Code, LG Light Grey RAL 7035, BL Black RAL 9005, customers to define while ordering. \*\* 36U and above sizes are allows vertical grounding sets.



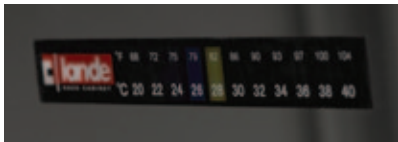


Baying Kit fo Free Standing DYNAMIC range cabinets while in use without side panels.

M6 Steel caged Nut Set, Screw and Nuts included, 20pcs set and 50 pcs set, and cabinet connection kit set accessories.

FIXING HARDWARE/ BAYING KIT	Logistics Data						COMPATIBLE WITH																							
							DYNAMIC Series Free Standing Cabinets W (Width) x D (Depth) mm			DYNAmx Series Free Standing Server Cabinets W (Width) x D (Depth) mm			NETbox Series Wall Mounting Cabinets W (Width) x D (Depth) mm			19" NETbox Series SOHO Cabinets W (Width) x D (Depth) mm			10" NETbox Series SOHO Cabinets W (Width) x D (Depth) mm			19" NETbox Home Series Cabinets W (Width) x D (Depth) mm			NETbox Slim Series Cabinets W (Width) x D (Depth) mm					
Part Number* and Product Description	Product Dimensions mm	Pack Dimensions mm	Product Net Weight kg	Product Gross Weight kg	QTY in Box pcs	Box Dimensions mm	Box Gross Weight kg	600x600	600x800	600x1000	800x600	800x800	800x1000	600x1000	800x1000	600x450	600x600	600x450+150	540x300	540x400	312x300	600x150	600x300	522x480	Single Frame with 80mm depth Frame	Double Frame System with 80mm depth Frame D:670mm	Double Frame System with 80mm depth Frame D:870mm	Double Frame System with 80mm depth Frame D:1070mm	Single Frame with 160mm depth Frame	
<b>LN-DGR-BGL-FSSR-CC</b> Baying Kit, 1 Set 4 pcs, U shaped, for all free standing cabinets usage without side panels	-	145x100x50	0,71	0,81	26	560x425x122	22	●	●	●	●	●	●	●	●	●	●	●	●	●	●	●	●	●	●	●	●	●	●	●
<b>LN-DGR-KFS-M620-XX</b> M6 Cage Nut Set, 1 Set 20 pcs, screw, nut, washer	-	82x82x100	0,16	0,25	30	560x425x122	8,4	●	●	●	●	●	●	●	●	●	●	●	●	●	●	●	●	●	●	●	●	●	●	●
<b>LN-DGR-KFS-M650-XX</b> M6 Cage Nut Set, 1 Set 50 pcs, screw, nut, washer	-	82x82x100	0,39	0,48	30	560x425x122	15,4	●	●	●	●	●	●	●	●	●	●	●	●	●	●	●	●	●	●	●	●	●	●	●

\* CC= Color Code, LG Light Grey RAL 7035, BL Black RAL 9005, customers to define while ordering.

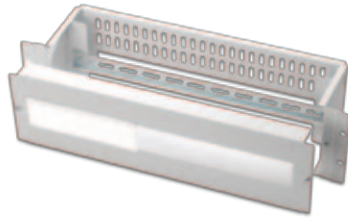


20-40 °C operating with color changing function, Lande Thermometer tapes are sticking to internal side of glass door, where need of tracing the internal temperature inside the cabinet, mainly used at wall cabinets where strict temperature measurements are not needed.

(-10/+50 °C operating function, double lithium battery, 2 years life Lande Digital thermometers are supplied integrated on decorative ABS Header Unit for NETbox wall mounting cabinets and DYNAmx server cabinets.

THERMOMETERS	Logistics Data						COMPATIBLE WITH																							
							DYNAMIC Series Free Standing Cabinets W (Width) x D (Depth) mm			DYNAmx Series Free Standing Server Cabinets W (Width) x D (Depth) mm			NETbox Series Wall Mounting Cabinets W (Width) x D (Depth) mm			19" NETbox Series SOHO Cabinets W (Width) x D (Depth) mm			10" NETbox Series SOHO Cabinets W (Width) x D (Depth) mm			19" NETbox Home Series Cabinets W (Width) x D (Depth) mm			NETbox Slim Series Cabinets W (Width) x D (Depth) mm					
Part Number and Product Description	Product Dimensions mm	Pack Dimensions mm	Product Net Weight kg	Product Gross Weight kg	QTY in Box pcs	Box Dimensions mm	Box Gross Weight kg	600x600	600x800	600x1000	800x600	800x800	800x1000	600x1000	800x1000	600x450	600x600	600x450+150	540x300	540x400	312x300	600x150	600x300	522x480	Single Frame with 80mm depth Frame	Double Frame System with 80mm depth Frame D:670mm	Double Frame System with 80mm depth Frame D:870mm	Double Frame System with 80mm depth Frame D:1070mm	Single Frame with 160mm depth Frame	
<b>LN-THM-SRT</b> Lande Thermometer tape, 20-40 C operating with color changing function	-	-	-	-	10	235x105	-	●	●	●	●	●	●	●	●	●	●	●	●	●	●	●	●	●	●	●	●	●	●	●
<b>LN-THM-ELC</b> Lande Digital Thermometer , 0-35 C, double lithium battery incl, together with ABS header Unit of cabinets	-	620x80x50	0,4	0,55	1	620x80x50	0,55							●	●	●	●	●												

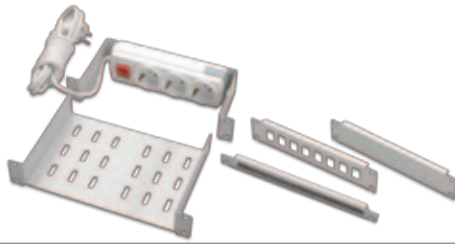
\*\* Applicable at polycarbonate door option of NETbox Slim Wall Mounting Cabinets.



3U 19" DIN RAIL integrated, Electrical Distribution box supply is in RAL 7035 Light Grey and RAL 9005 Black colors. At a capacity of 18 Modules. Front Opening is covered with PVC module cover plates which are breakable as per used capacity.

3U 19" ELECTRICAL DISTRIBUTION BOX and ACCESSORIES	Logistics Data		COMPATIBLE WITH																										
			DYNAMIC Series Free Standing Cabinets W (Width) x D (Depth) mm			DYNAMax Series Free Standing Server Cabinets W (Width) x D (Depth) mm			NETbox Series Wall Mounting Cabinets W (Width) x D (Depth) mm			19" NETbox Series SOHO Cabinets W (Width) x D (Depth) mm			10" NETbox Series SOHO Cabinets W (Width) x D (Depth) mm			19" NETbox Home Series Cabinets W (Width) x D (Depth) mm			NETbox Slim Series Cabinets W (Width) x D (Depth) mm			DYNAlframe Frame Systems W 530 x D (Depth) mm					
Part Number* and Product Description	Product Dimensions mm	Pack Dimensions mm	Product Net Weight kg	Product Gross Weight kg	QTY in Box pcs	Box Dimensions mm	Box Gross Weight kg	600x600	600x800	600x1000	800x600	800x800	800x1000	600x1000	800x1000	600x450	600x600	600x450+150	540x300	540x400	312x300	600x150	600x300	522x480	Single Frame with 80mm depth Frame	Double Frame System with 80mm depth Frame D:670mm	Double Frame System with 80mm depth Frame D:870mm	Double Frame System with 80mm depth Frame D:1070mm	Single Frame with 160mm depth Frame
<b>LN-PRZ-MOD-3U15-CC</b> 3U 19" electrical distribution box 18 module capacity	482x123x133	500x150x155	2,59	2,89	4	545x425x400	13,6	●	●	●	●	●	●	●	●	●	●	●	●	●	●	●	●	●	●	●	●	●	●
<b>LN-PRZ-SGT-316A-XX</b> Miniature circuit breaker, 3phase, 3x16A 220/380vac	-	-	-	-	-	-	-	●	●	●	●	●	●	●	●	●	●	●	●	●	●	●	●	●	●	●	●	●	●
<b>LN-PRZ-SGT-116A-XX</b> Miniature circuit breaker, 3phase, 3x16A 220/380vac	-	-	-	-	-	-	-	●	●	●	●	●	●	●	●	●	●	●	●	●	●	●	●	●	●	●	●	●	●
<b>LN-PRZ-SCK-SSRM-XX</b> Schuko Socket, Rail Type, 250vac, 16A	-	-	-	-	-	-	-	●	●	●	●	●	●	●	●	●	●	●	●	●	●	●	●	●	●	●	●	●	●

\* CC= Color Code, LG Light Grey RAL 7035, BL Black RAL 9005, customers to define while ordering.



Specifically designed accessory range for 10" w=312 D=300mm cabinets. Various functions in its product range are available, as for energy distribution, equipment housing, cable management.

10" NETbox SOHO Accessories	Logistics Data		COMPATIBLE WITH																											
			DYNAMIC Series Free Standing Cabinets W (Width) x D (Depth) mm			DYNAMax Series Free Standing Server Cabinets W (Width) x D (Depth) mm			NETbox Series Wall Mounting Cabinets W (Width) x D (Depth) mm			19" NETbox Series SOHO Cabinets W (Width) x D (Depth) mm			10" NETbox Home Series Cabinets W (Width) x D (Depth) mm			NETbox Slim Series Cabinets W (Width) x D (Depth) mm			DYNAlframe Frame Systems W 530 x D (Depth) mm									
Part Number and Product Description	Product Dimensions mm	Pack Dimensions mm	Product Net Weight kg	Product Gross Weight kg	QTY in Box pcs	Box Dimensions mm	Box Gross Weight kg	600x600	600x800	600x1000	800x600	800x800	800x1000	600x1000	800x1000	600x450	600x600	600x450+150	540x300	540x400	312x300	600x150	600x300	522x480	Single Frame with 80mm depth Frame	Double Frame System with 80mm depth Frame D:670mm	Double Frame System with 80mm depth Frame D:870mm	Double Frame System with 80mm depth Frame D:1070mm	Single Frame with 160mm depth Frame	
<b>LN-SBT-RMO-1U10-CC</b> 1U 10" Shelf D=150mm	254x150x44	270x165x50	0,37	0,45	32	545x425x400	15,5														●									
<b>LN-KDG-YKD-05FC-CC</b> 1/2U 10" Cable Management Panel brushed, for patchcord entry	254x12x22	265x20x50	0,07	0,11	66	560x425x122	8,5															●								
<b>LN-PNL-SP-1U8P-CC</b> 1U patch panel empty for RJ45 keystone jacks	254x12x44	265x20x50	0,27	0,31	66	560x425x122	21,5															●								
<b>LN-PRZ-ONF-1U3P-SC</b> 1U 10" 3 way power Stripe, with plug and on/off Switch	254x100x44	270x165x50	0,60	0,70	14	560x425x122	11															●								
<b>LN-PNL-KPN-1U10-CC</b> 1U 10" Blank Panel	254x12x44	265x20x50	0,09	0,13	66	560x425x122	9,5															●								

## VERTICAL CABLE MANAGEMENT PANELS FREE STANDING TYPE



Vertical Cable managers, for use of carrying the cables into the final connection point. Cable Manager sizes are W=97mm D=97mm. 5mm diameter steel wires specially formed and connected as a cable manager module. maximum openings for cable management are available due to wire mesh structure. Protection of cables is %100 level due to full radius structure on the wire mesh systems. Wire Mesh cable managers are zinc plated 8-12 micron. Front cover plate is specially formed Extruded Aluminium material. Front cover

plate is in RAL 9005 Black color for RAL 9005 Black Cabinets, in RAL 7016 Anthracite Grey color for RAL 7035 Light Grey Cabinets. Special clips hinge system allows opening right to left or left to right. 36U and higher product sizes, the front cover plate is splitted in to 2 parts where the quick access allowed to the required area

### Velcro Stripes

For management of cables and to create cable reserve, or definition and separation of cables, 50m long roll, 5 color option, w=13mm width, every 25cm pre-cut for easy preparation, with flame retardancy

VERTICAL CABLE MANAGEMENT PANELS FREE STANDING TYPE	Logistics Data						COMPATIBLE WITH																							
							DYNAmic Series Free Standing Cabinets W (Width) x D (Depth) mm		DYNAmix Series Free Standing Server Cabinets W (Width) x D (Depth) mm		NETbox Series Wall Mounting Cabinets W (Width) x D (Depth) mm		19" NETbox Series SOHO Cabinets W (Width) x D (Depth) mm		10" NETbox Series SOHO Cabinets W (Width) x D (Depth) mm		19" NETbox Home Series Cabinets W (Width) x D (Depth) mm		NETbox Slim Series Cabinets W (Width) x D (Depth) mm		DYNAmic Frame Systems W 530 x D (Depth) mm									
Part Number* and Product Description	Product Dimensions mm	Pack Dimensions mm	Product Net Weight kg	Product Gross Weight kg	QTY in Box pcs	Box Dimensions mm	Box Gross Weight kg	600x600	600x800	600x1000	800x600	800x800	800x1000	600x1000	800x1000	600x450	600x600	600x450+150	540x300	540x400	312x300	600x150	600x300	522x480	Single Frame with 80mm depth Frame	Double Frame System with 80mm depth Frame D:670mm	Double Frame System with 80mm depth Frame D:870mm	Double Frame System with 80mm depth Frame D:1070mm	Single Frame with 160mm depth Frame	
<b>LN-KDG-ORG-22UD-CC</b> 22U Wire Mesh Cable Management panel set left/right	97x97x996	220x120x1050	3,05	3,2	1	220x120x1050	3,2				●	●																		
<b>LN-KDG-ORG-26UD-CC</b> 26U Wire Mesh Cable Management panel set left/right	97x97x1175	220x120x1250	3,6	3,9	1	220x120x1250	3,9				●	●																		
<b>LN-KDG-ORG-32UD-CC</b> 32U Wire Mesh Cable Management panel set left/right	97x97x1440	220x120x1525	4,4	4,8	1	220x120x1525	4,8				●	●																		
<b>LN-KDG-ORG-36UD-CC</b> 36U Wire Mesh Cable Management panel set left/right	97x97x1620	220x120x1770	4,9	5,3	1	220x120x1770	5,3				●	●																		
<b>LN-KDG-ORG-39UD-CC</b> 39U Wire Mesh Cable Management panel set left/right	97x97x1752	220x120x1825	5,3	5,7	1	220x120x1825	5,7				●	●	●																	
<b>LN-KDG-ORG-42UD-CC</b> 42U Wire Mesh Cable Management panel set left/right	97x97x1885	220x120x1960	5,7	6,1	1	220x120x1960	6,1				●	●	●																	
<b>LN-KDG-ORG-45UD-CC</b> 45U Wire Mesh Cable Management panel set left/right	97x97x2020	220x120x2110	6,3	6,8	1	220x120x2110	6,8				●	●	●																	
<b>LN-KDG-ORG-VLCR-01</b> Cable Management Velcro Tape, 50m long roll, Yellow	-	-	-	-	-	-	-	●	●	●	●	●	●	●	●	●	●	●	●	●	●	●	●	●	●	●	●	●	●	●
<b>LN-KDG-ORG-VLCR-02</b> Cable Management Velcro Tape, 50m long roll, Red	-	-	-	-	-	-	-	●	●	●	●	●	●	●	●	●	●	●	●	●	●	●	●	●	●	●	●	●	●	●
<b>LN-KDG-ORG-VLCR-03</b> Cable Management Velcro Tape, 50m long roll, White	-	-	-	-	-	-	-	●	●	●	●	●	●	●	●	●	●	●	●	●	●	●	●	●	●	●	●	●	●	●
<b>LN-KDG-ORG-VLCR-04</b> Cable Management Velcro Tape, 50m long roll, Green	-	-	-	-	-	-	-	●	●	●	●	●	●	●	●	●	●	●	●	●	●	●	●	●	●	●	●	●	●	●
<b>LN-KDG-ORG-VLCR-05</b> Cable Management Velcro Tape, 50m long roll, Black	-	-	-	-	-	-	-	●	●	●	●	●	●	●	●	●	●	●	●	●	●	●	●	●	●	●	●	●	●	●

\* CC= Color Code, LG Light Grey RAL 7035, BL Black RAL 9005, customers to define while ordering.